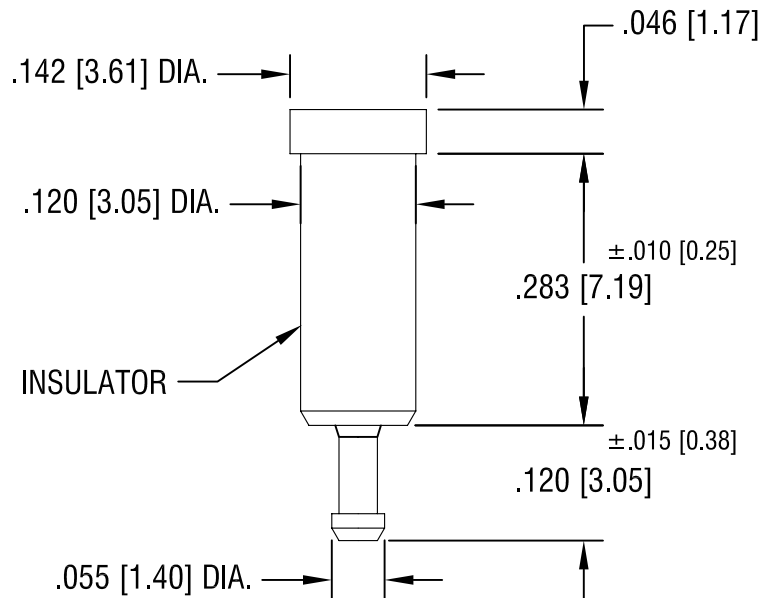
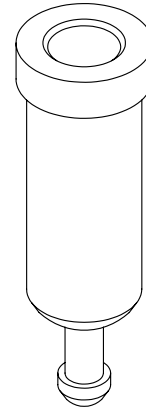
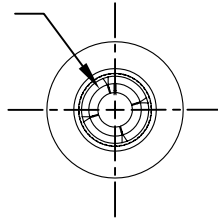


THIS DOCUMENT IS THE PROPERTY OF
KEYSTONE ELECTRONICS CORP. AND
SHALL NOT BE REPRODUCED, DISTRIBUTED
OR USED AS A BASIS FOR MANUFACTURE
WITHOUT PRIOR WRITTEN PERMISSION
FROM KEYSTONE ELECTRONICS CORP.

SPRING CONTACT TO
ACCEPT .040 [1.02]
PIN DIA.



| PART NO. | COLOR |
|----------|-------|
| 11002 | WHITE |
| 11002-R | RED |
| 11002-B | BLACK |

NOTES:

1. TERMINAL JACK : MAT'L - BERYLLIUM COPPER (QQ-C-533)
2. BUSHING: MAT'L - PTFE

KEYSTONE ELECTRONICS CORP.

ASTORIA, N.Y. 11105-2017

| | | | |
|----------------------------|-----------------|--------------------------|---------|
| PART NAME | | PTFE INSULATED TEST JACK | |
| MATERIAL | | AS NOTED | |
| FINISH | | DRN BY | DATE |
| GOLD PLATE | | N.T. | 4.18.08 |
| | | APP'D | SCALE |
| | | LN | 5X |
| TOLERANCES | INCH [MM] | CODE | DWG NO. |
| DECIMAL | ± .005 [± 0.15] | C | 11002- |
| ANGULAR | ± 1° | | |
| UNLESS OTHERWISE SPECIFIED | | | |

| | | |
|----------|--------------------------|------|
| 11.17.08 | CHANGE AS PER ECN 08-178 | A |
| DATE | DESCRIPTION | REV. |