



CEL (California Eastern

## PS7200K-1A-F3-A

Sashe na Kari:

Manufacturer / Brand:

Bayanin samfur

Datasheets:

RoHs Status

Ship Daga

Shipment Way

PS7200K-1A-F3-A

CEL (California Eastern Laboratories)

SSR RELAY SPST-NO 200MA 0-40V

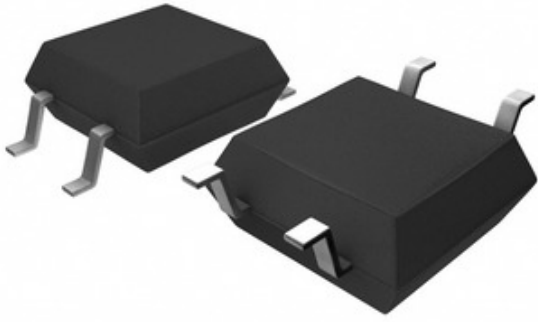
PS7200K-1A-F3-A.pdf

Kira kyauta / RoHS mai yarda

Hong Kong

DHL/Fedex/TNT/UPS/EMS

### Laboratories)



**NEMAN ZANCE**

Hoton hoto na iya zama wakilci. Duba cikakkun bayanai don samfuriin samfuriin.

### Bayani na PS7200K-1A-F3-A

SASHE NA KARI	PS7200K-1A-F3-A
MANUFACTURER	CEL (California Eastern Laboratories)
BAYANI	SSR RELAY SPST-NO 200MA 0-40V
MATSAYIN FARKO / MATSAYIN ROHS	Kira kyauta / RoHS mai yarda
TAKARDAR BAYANAI	PS7200K-1A-F3-A.pdf
RAGEWA - LOAD	0V ~ 40V
RIGAKA - INPUT	1.2VDC
YANAYIN KADDAMARWA	Gull Wing
ASUSUN NA'URA MAI BA DA KYAUTA	4-SOP (2.54mm)
SAUTI	PS, OCMOS
PACKAGING	Tape & Reel (TR)
PACKAGE / CASE	4-SOP (0.173", 4.40mm)
KAYAN AIKI	AC, DC
SAURAN SUNAYE	PS7200K-1AATR
KUNKWASA KAN YANAYI (MAX)	2 Ohms
NAU'IN SANYA	Surface Mount
SENSITIVITY LEVEL (MSL)	1 (Unlimited)
LOAD YANZU	200mA
MATSAYIN FARKO / MATSAYIN ROHS	Lead free / RoHS Compliant
BAYANIN DALLA-DALLA	Solid State Relay SPST-NO (1 Form A) 4-SOP (0.173", 4.40mm)
HANYA	SPST-NO (1 Form A)

### Related Tags

CEL (California Eastern Laboratories) PS7200K-1A-F3-A	Mai Rarraba PS7200K-1A-F3-A	Mai ba da PS7200K-1A-F3-A
Farashin PS7200K-1A-F3-A	Hoto PS7200K-1A-F3-A	Hoton PS7200K-1A-F3-A
Bayanan Bayani na PS7200K-1A-F3-A	Bayanin PS7200K-1A-F3-A Download	Bayanan PS7200K-1A-F3-A
Kasuwancin PS7200K-1A-F3-A	Sayi PS7200K-1A-F3-A	Sayi CEL (California Eastern Laboratories) PS7200K-1A-F3-A
CEL (California Eastern Laboratories) PS7200K-1A-F3-A	Mai ba da CEL (California Eastern Laboratories)	Mai Rarraba CEL (California Eastern Laboratories)
CEL (California Eastern Laboratories) PS7200K-1A-F3-A	California Eastern Labs PS7200K-1A-F3-A	California Eastern Laboratories PS7200K-1A-F3-A
CEL PS7200K-1A-F3-A	CEL (California Eastern Laboratories) PS7200K-1A-F3-A	

### Abubuwan da suka shafi

<p><b>PS7200K-1A-F3</b> Manufacturers: CEL (California Eastern Laboratories) Bayani: SSR RELAY SPST-NO 200MA 0-40V A stock: Out stock <b>RFQ</b></p>	<p><b>PS7200K-1A-E3-A</b> Manufacturers: CEL (California Eastern Laboratories) Bayani: SSR RELAY SPST-NO 200MA 0-40V A stock: Out stock <b>RFQ</b></p>
<p><b>PS7200N-1A-F3-M-A</b> Manufacturers: CEL (California Eastern Laboratories) Bayani: SSR RELAY SPST-NO 250MA 0-40V A stock: Out stock <b>RFQ</b></p>	<p><b>PS7200N-1A-F3-A</b> Manufacturers: CEL (California Eastern Laboratories) Bayani: SSR RELAY SPST-NO 250MA 0-40V A stock: Out stock <b>RFQ</b></p>
<p><b>PS7200H-1A-F3</b> Manufacturers: CEL (California Eastern Laboratories) Bayani: SSR RELAY SPST-NO 160MA 0-40V A stock: Out stock <b>RFQ</b></p>	<p><b>PS7200H-1A-F3-A</b> Manufacturers: CEL (California Eastern Laboratories) Bayani: SSR RELAY SPST-NO 160MA 0-40V A stock: Out stock <b>RFQ</b></p>
<p><b>PS7200K-1A-A</b> Manufacturers: CEL (California Eastern Laboratories) Bayani: SSR RELAY SPST-NO 200MA 0-40V A stock: Out stock <b>RFQ</b></p>	<p><b>PS7200R-1A</b> Manufacturers: CEL (California Eastern Laboratories) Bayani: SSR RELAY SPST-NO 120MA 0-40V A stock: Out stock <b>RFQ</b></p>
<p><b>PS7200R-1A-A</b> Manufacturers: CEL (California Eastern Laboratories) Bayani: SSR RELAY SPST-NO 120MA 0-40V A stock: Out stock <b>RFQ</b></p>	<p><b>PS7200K-1A</b> Manufacturers: CEL (California Eastern Laboratories) Bayani: SSR RELAY SPST-NO 200MA 0-40V A stock: Out stock <b>RFQ</b></p>
<p><b>PS7200N-1A-M-A</b> Manufacturers: CEL (California Eastern Laboratories) Bayani: SSR RELAY SPST-NO 250MA 0-40V A stock: Out stock <b>RFQ</b></p>	<p><b>PS7200N-1A-A</b> Manufacturers: CEL (California Eastern Laboratories) Bayani: SSR RELAY SPST-NO 250MA 0-40V A stock: Out stock <b>RFQ</b></p>

